



Hampton Way, Bishops Stortford, CM23

BUTLER & STAG



Butler & Stag are delighted to offer this newly built detached four bedroom home to rent within the popular Stortford Fields development. These beautifully presented properties boast an impressive EPC Rating A and have been thoughtfully designed to suit modern family living.



- Three Bedroom House
- New Development
- New Move In Incentives
- Priority For Essential Workers
- EPC Rating A
- Driveway Parking

The ground floor features a welcoming entrance hall, a bright and comfortable living room, and a contemporary kitchen/diner complete with French doors opening onto an enclosed rear garden. A convenient downstairs WC/utility room completes the layout.

The first floor has a double bedroom, shower room and a separate living room

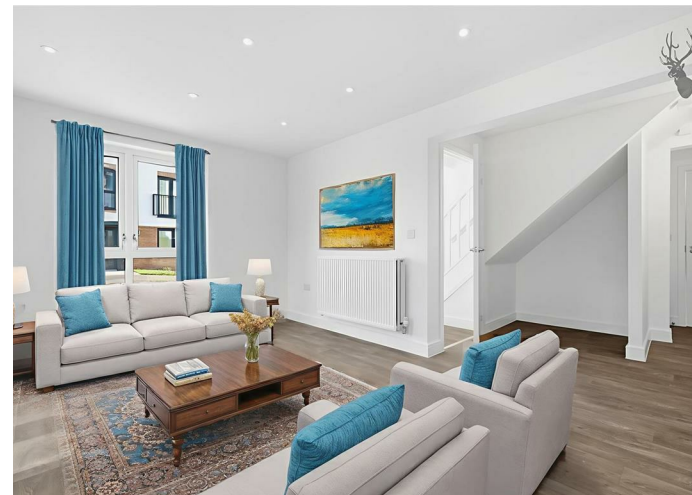
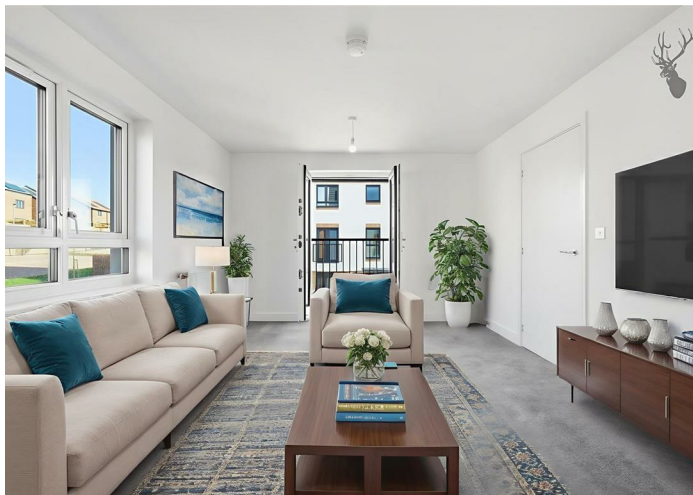
On the second floor, the homes provide three well-proportioned bedrooms, including a principal bedroom with en-suite shower room, along with a stylish family bathroom. Each home benefits from driveway parking for two cars, an electric vehicle charging point, and solar panels to support energy efficiency. Pets will be considered, and priority for renting will be given to essential workers.

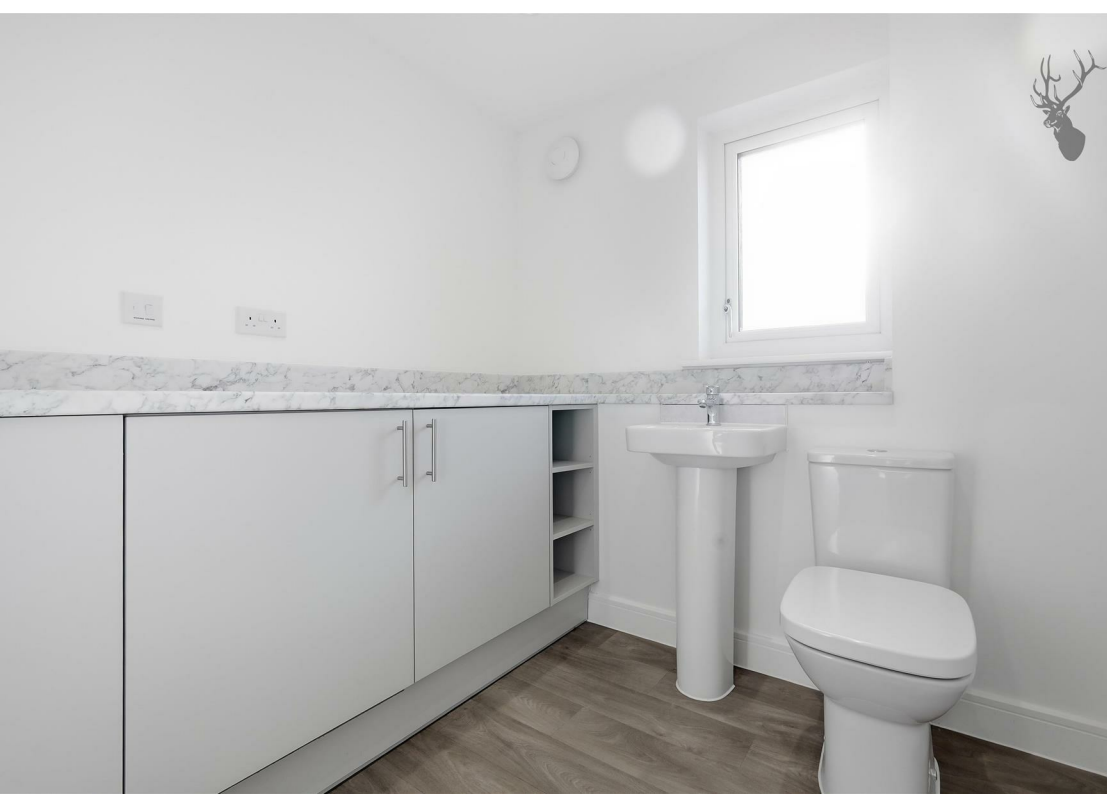
The Stortford Fields development is ideally positioned for families and commuters alike. The area falls within the catchment of well-regarded primary and secondary schools, making it a popular choice for those seeking quality education close to home. Bishop's Stortford town centre is within easy reach and offers a wide range of shops, cafés, supermarkets, leisure facilities and green spaces. Excellent transport links are available nearby, including convenient access to the M11 and Bishop's Stortford mainline station, providing direct services into London Liverpool Street and Cambridge.

One months free rent if offers agreed by 30th April 2026, terms and conditions apply

CGI visuals were created specifically for promotional use

Council Tax Band - New Build Not Available Yet





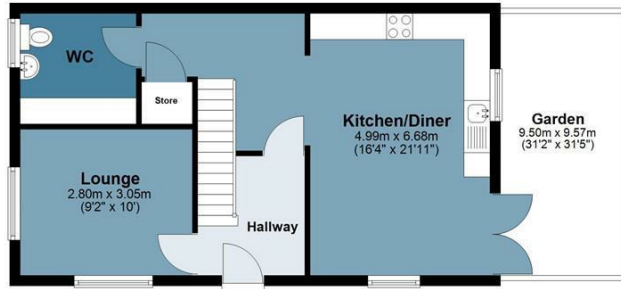
Hampton Way

Approx. Gross Internal Area 122.7 Sq M (1320.7 Sq Ft)

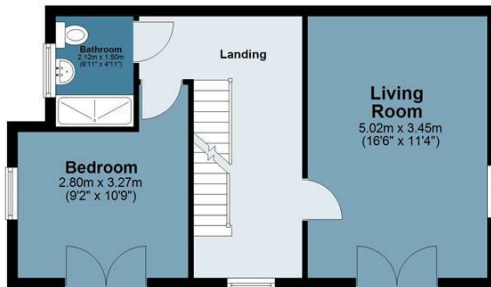
BUTLER & STAG



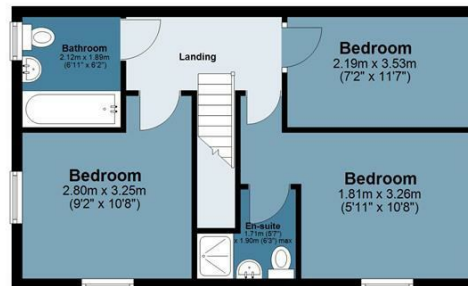
Ground Floor
Approx. 39.0 sq. metres (419.9 sq. feet)



First Floor
Approx. 43.4 sq. metres (466.7 sq. feet)



Second Floor
Approx. 40.3 sq. metres (434.1 sq. feet)



Measurements are approximate and for illustration purposes only. While we do not doubt the accuracy and completeness, we advise you conduct a careful independent assessment of the property to determine monetary value.
© @modephotouk www.modephoto.co.uk

BUTLER & STAG

☎ 020 8504 9000

🏠 184 Queen's Road, Buckhurst Hill, IG9 5BD

✉ buckhursthill@butlerandstag.com

IMPORTANT NOTICE - These particulars have been prepared in good faith and they are not intended to constitute part of an offer or contract. We have not performed a structural survey on this property and the services, appliances and specific fittings have not been tested. All photographs, measurements, floor plans and distances referred to are given as a guide and should not be relied upon.

www.butlerandstag.uk